

RNAV1 (DME/DME or GNSS)
STANDARD DEPARTURE CHART -
INSTRUMENT (SID) - ICAO

DISTANCES IN NAUTICAL MILES
TRACKS ARE MAGNETIC
ALTITUDES AND ELEVATIONS ARE IN FEET

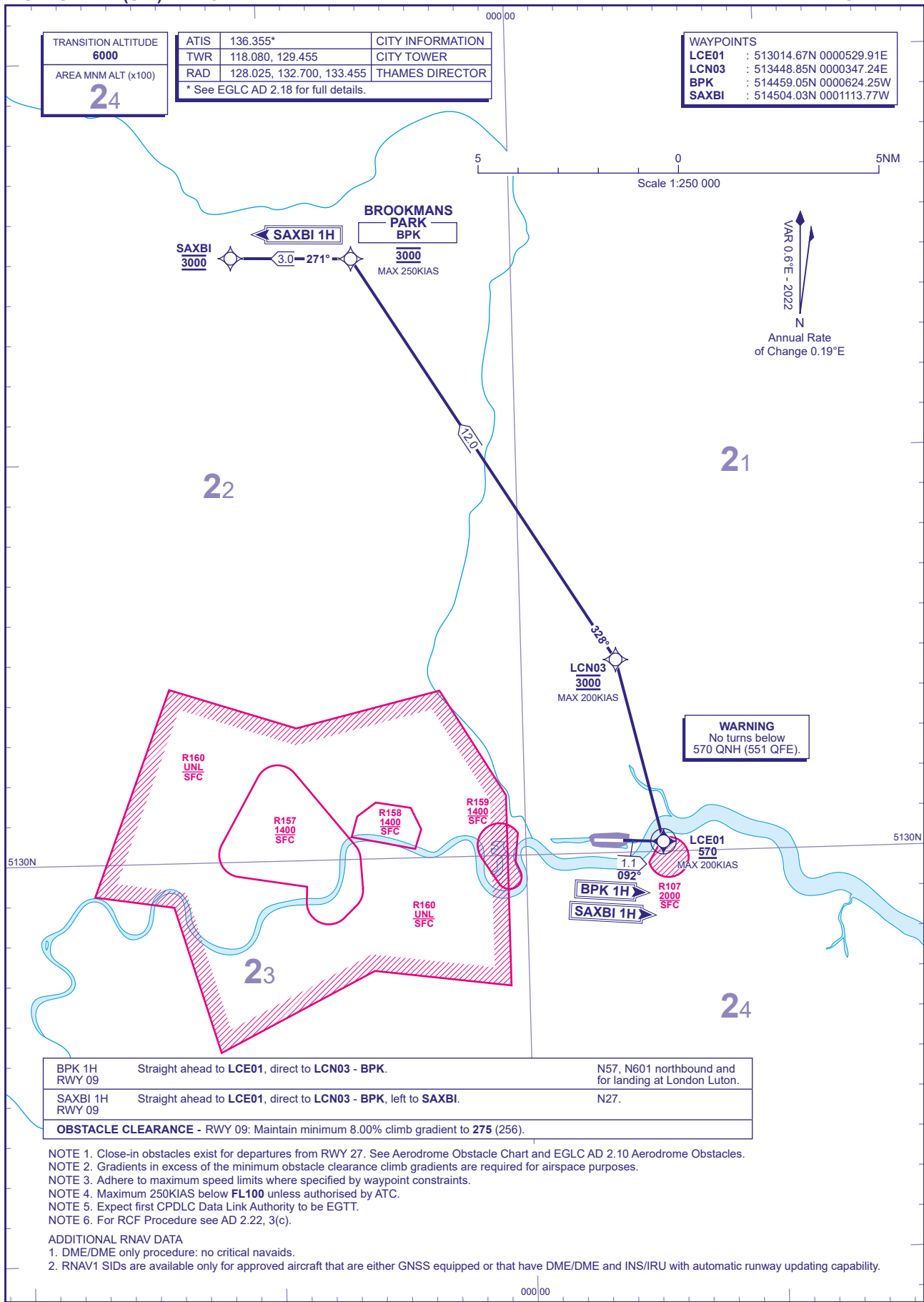
LONDON CITY RWY 09
BPK 1H SAXBI 1H

TRANSITION ALTITUDE
6000
AREA MNM ALT (x100)
24

ATIS	136.355*	CITY INFORMATION
TWR	118.080, 129.455	CITY TOWER
RAD	128.025, 132.700, 133.455	THAMES DIRECTOR

* See EGLC AD 2.18 for full details.

WAYPOINTS	
LCE01	: 513014.67N 0000529.91E
LCN03	: 513448.85N 0000347.24E
BPK	: 514459.05N 0000624.25W
SAXBI	: 514504.03N 0001113.77W



CHANGE (11/23): MINIMUM CLIMB GRADIENT INCREASED.

AERO INFO DATE 11 AUG 23

AD 2-EGLC-6-6